

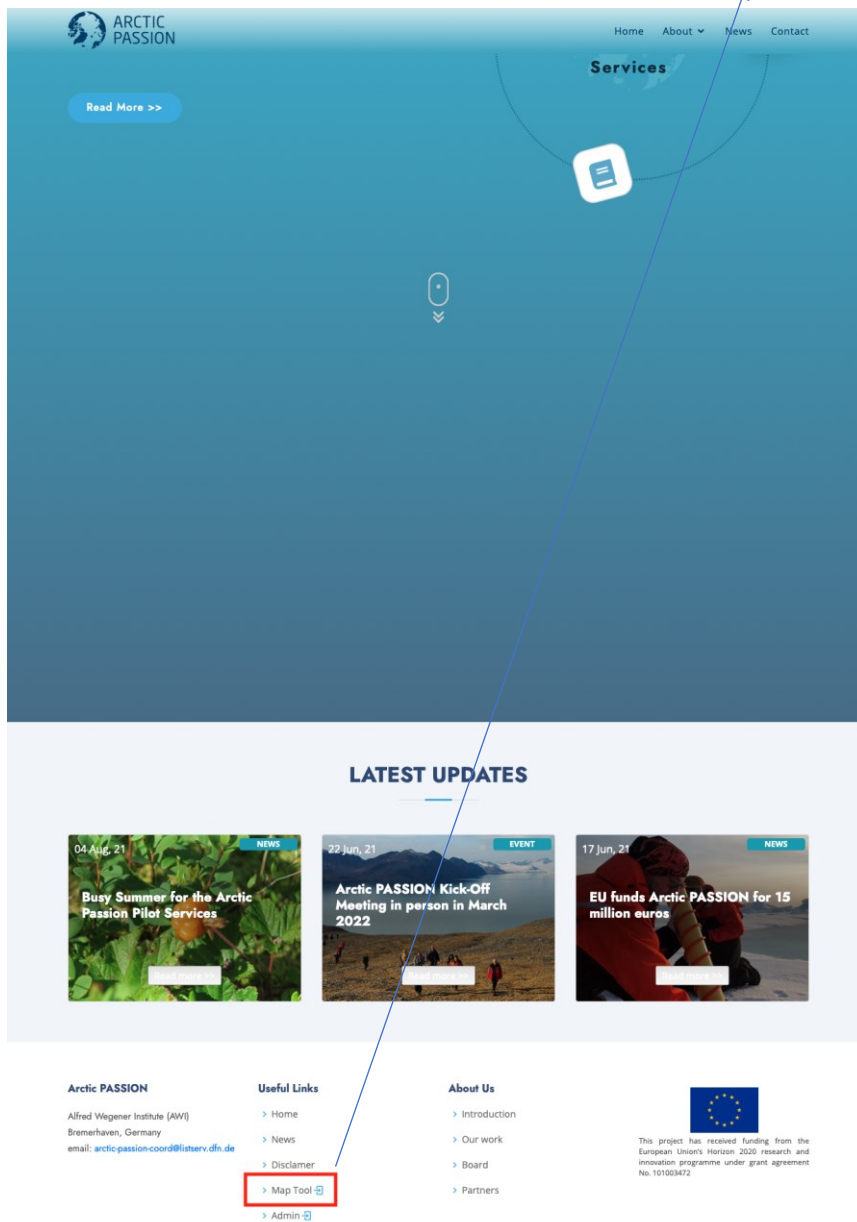
A Guide to the map tool

The purpose of the map tool is to collect new information or update existing information for an interactive map that will be displayed on the Arctic PASSION website. This map tool allows marking locations visually or by inserting coordinates.

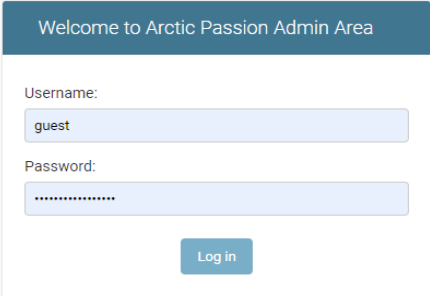
This map will be developed throughout the project period to share information about the Arctic PASSION activities.

At a later stage, it will be possible to link photos, videoclip, stories and other information related to the specific locations marked on the map published on the website.

1. Launch the map application by clicking the link to 'Map Tool' in the footer section of the website.



2. Enter the username as **guest** and password as **arcticpassion2021**



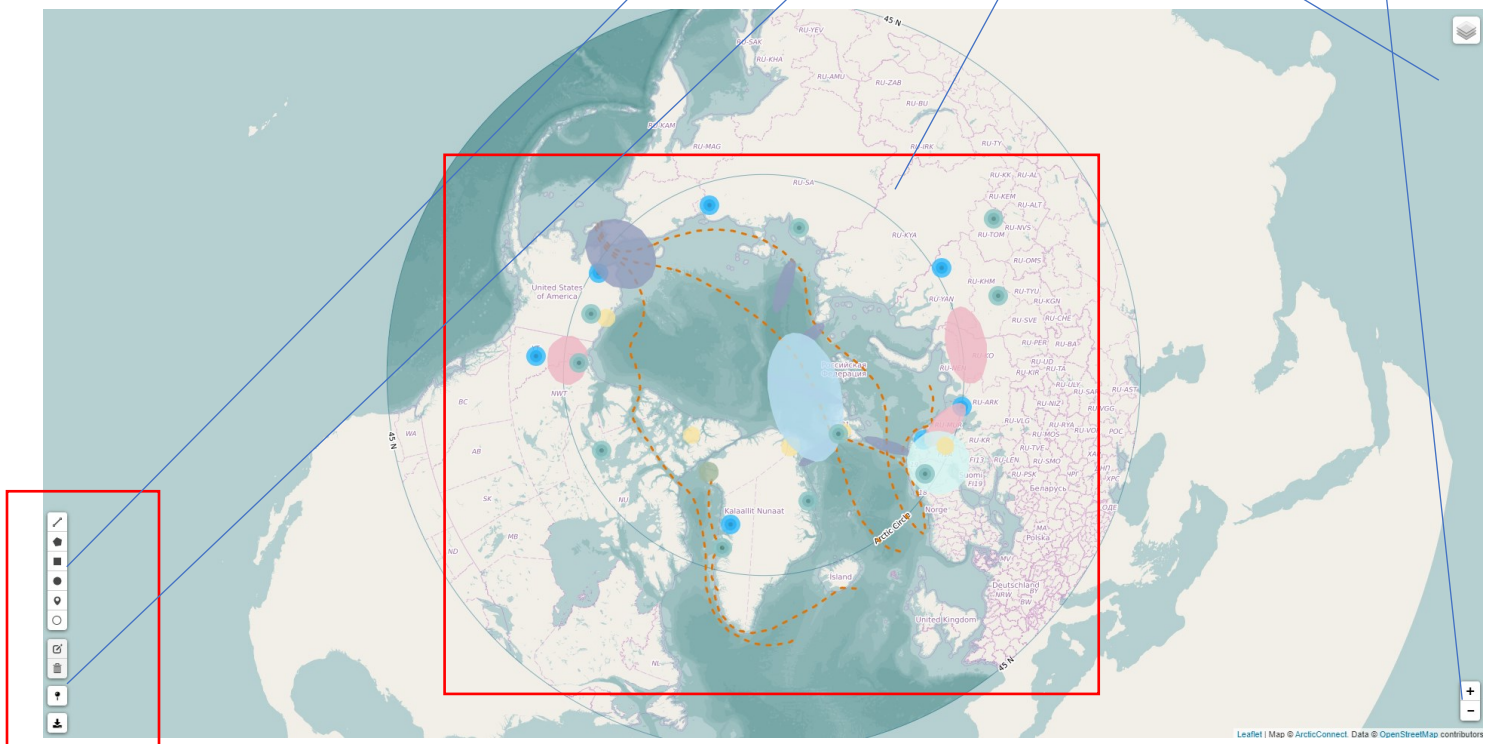
Welcome to Arctic Passion Admin Area

Username:

Password:

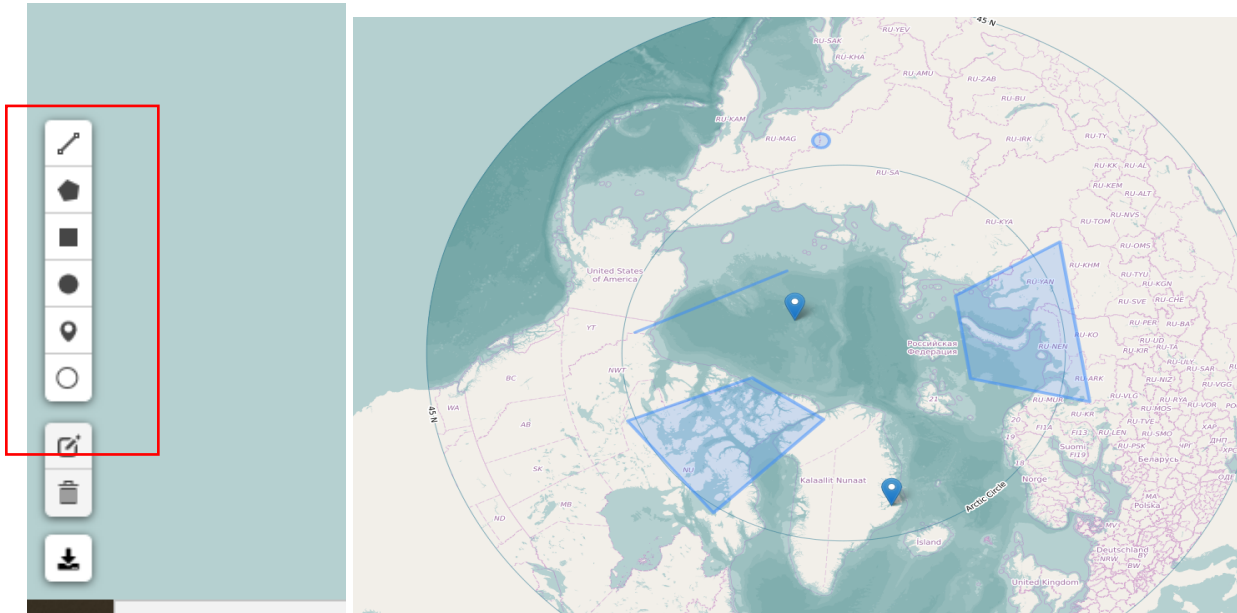
3. Depending upon the network speed, the map window will load all the required GIS layers within 5 to 10 seconds.

4. The map window consists of mainly 5 parts, **Drawing tools, Add XY, Map area, legend and zoom-in-out tool**

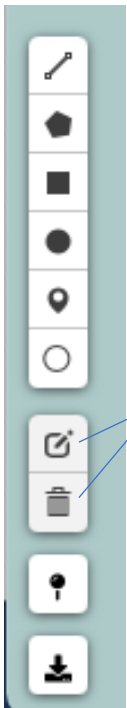


5. In the legend section multiple projection options are available, and individual GIS layers can be turned on or off based on preferences.

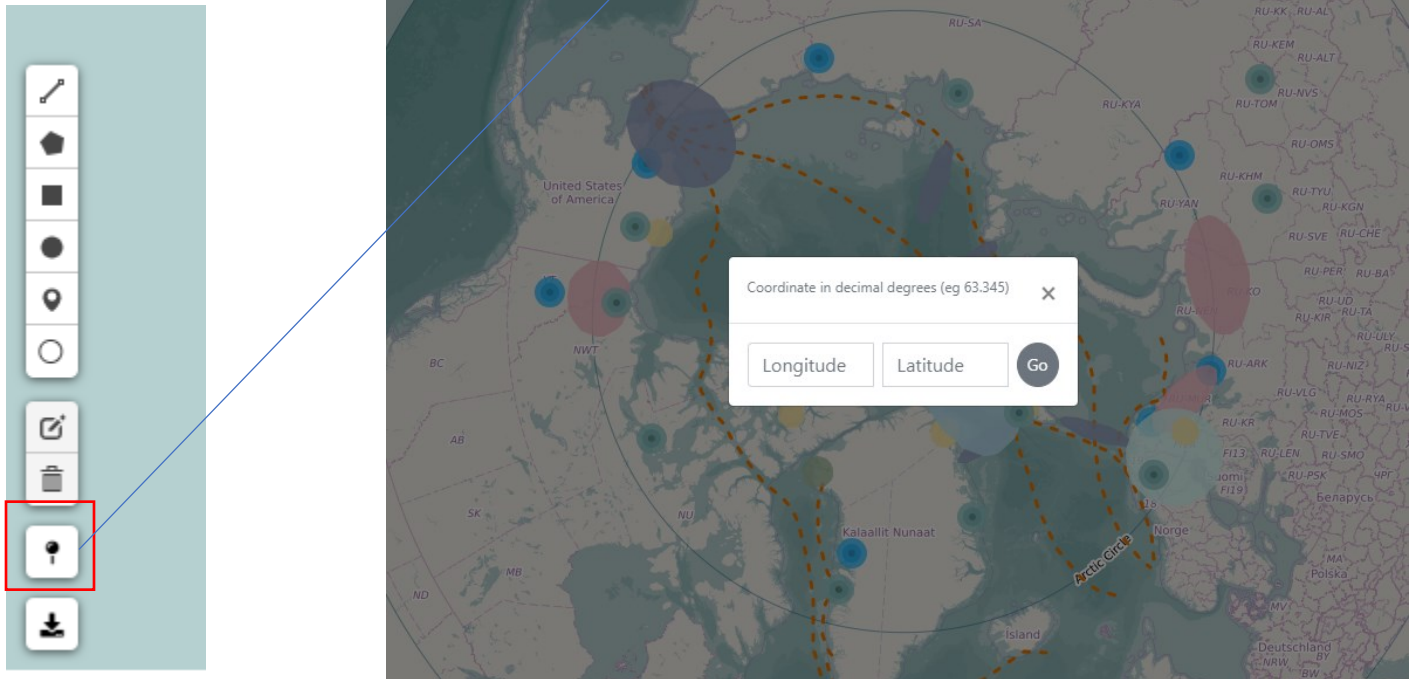
6. The list of available layers is non-editable but could be used as a reference to plot new information or for correction7. To start drawing on the map, press the draw icon from the menu to activate the drawing tool and start drawing on the map area. There is a choice of drawing a point, line, or polygon.



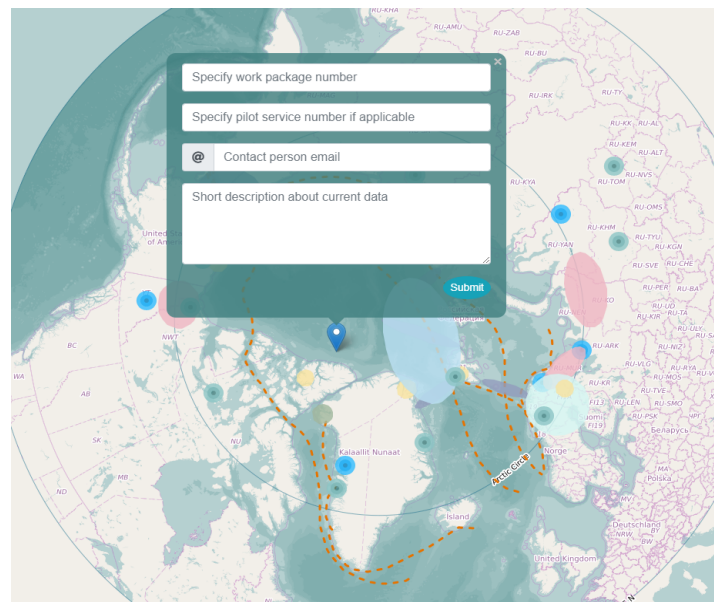
8. The drawn sketches can be easily edited or could be further refined by the using the [edit tool](#). Unwanted sketches can be removed by clicking on the [delete icon](#).



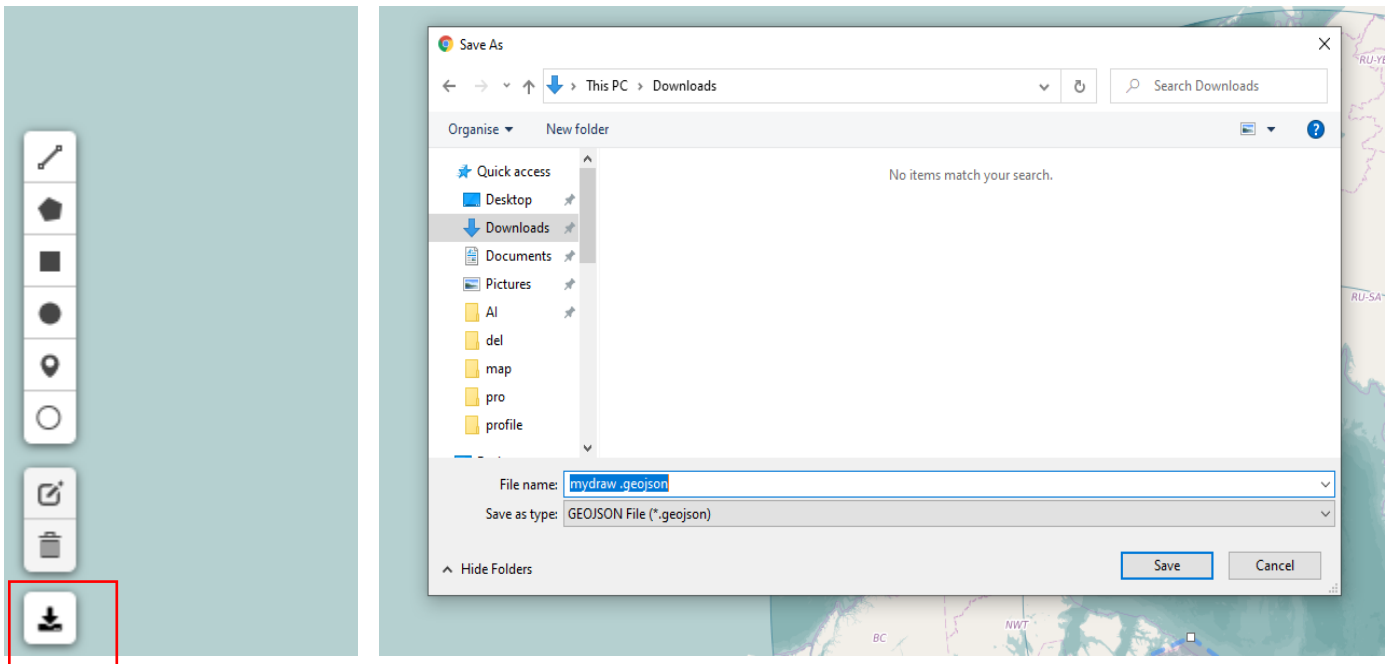
10. Alternately user can add point to the map using **Add XY tool**. Please note map will accept coordinate only in Decimal Degree format only.



11. We expect the user has to fill a small data entry form which would be automatically popup at the location every time user drawn a new sketch on the map.



12 Finally all drawing sketches can be easily downloaded to the local system by pressing the download icon.



13. Please send us the downloaded file by email to arcticpassion@grida.no.